

LOCATION
CENTRAL MOZAMBIQUE

SECTOR
MINERAL SANDS

CLIENT
MINING COMPANY

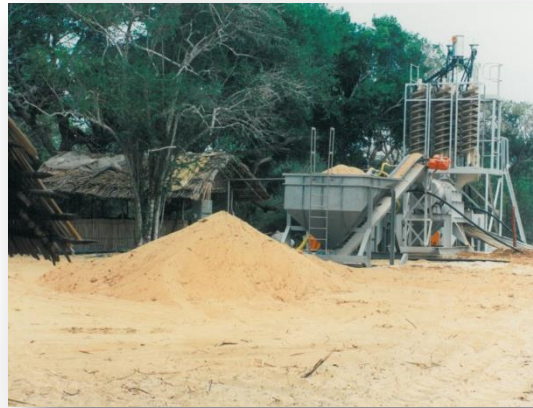


General Mining (TiGen Mineral Sands Project)

OVERVIEW

A-Cubed Consulting (as LCS Consulting) was retained in October 1997 by General Mining (now BHP Billiton) to provide logistics consulting services to the TiGen Project. General Mining had been granted a concession by the Government of Mozambique at Moebase, central Mozambique, to conduct exploration and the sampling of mineral sands deposits.

Consulting services were provided over a period of four years covering an extensive battery of studies relating to inbound and outbound logistics, and the logistical implications of the possible siting of a heavy minerals concentrate in several other locations, that were under consideration.



SCOPE OF WORK & METHODOLOGY

The scope of work and methodologies involved varied with each study however these were always informed by the local and practical experience and extensive knowledge of partners and associates.

With Mozambique still recovering from decades of internal upheaval, the transport infrastructure was in generally poor condition, where it existed at all, and consequently innovative means of handling and transporting a variety of materials where necessary; also ensuring that globally accepted best-practices were adhered to.

A-Cubed were tasked with a variety of studies over this period, including:

- seaborne logistics operational models
- cost modelling
- inbound project construction logistics
- landside logistics – operations and cost modelling
- materials handling
- smelter port assessments and comparisons
- marine fleet chartering options
- marine fleet modelling and selection