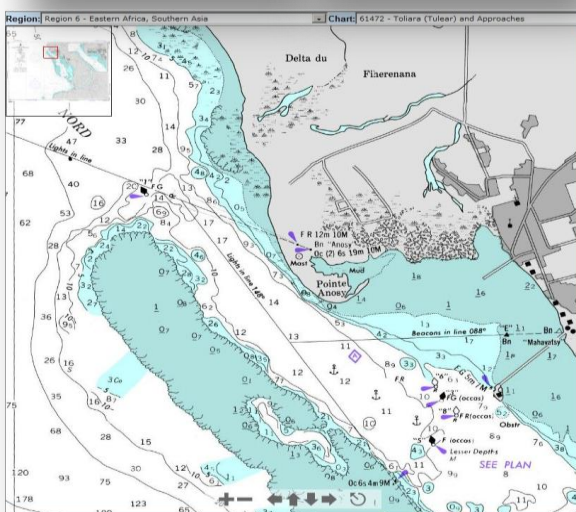
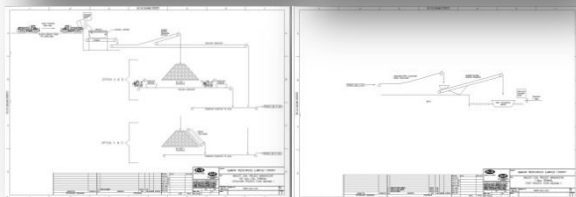
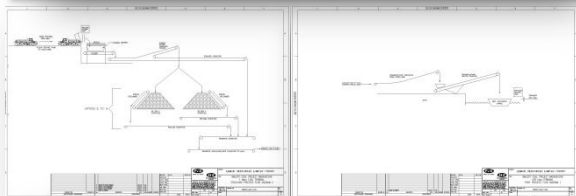


LOCATION
MADAGASCAR

SECTOR
COAL

CLIENT
MINING COMPANY



Lemur Resources Imaloto Coal Project

OVERVIEW

In 2011, the ASX listed company, Lemur Resources was in an exploration phase of their Imaloto Coal Project in a remote area in south-west Madagascar that had yielded very promising results.

Lemur needed to investigate more thoroughly the options available to them to secure an export route for initial coal production in order to satisfy short-medium term demands, through the existing port of Toliara (Tulear).

The approach was therefore made to A-Cubed's JV company, Ports of Africa, with their experience and expertise in installing, operating and rehabilitating port terminals in Africa.



SCOPE OF WORK & METHODOLOGY

A-Cubed, with their Ports of Africa engineering partners, were commissioned to undertake a Port Scoping Study requiring a field trip to site, interviews with various parties and an investigation into likely transport methodologies and related order-of-magnitude capital and operational costs.

Notwithstanding the challenging marine, layout and locational constraints of the present port, the Study identified several innovative options to stockpile, convey and load out product using various proven materials handling stevedoring and marine systems. The options were carefully considered, ranked and recommendations made to the client against several production scenarios.

The Study determined that the Port of Toliara is capable of providing reasonable throughput capacity for Lemur from which coal exports may be shipped, competitively and effectively, to regional and international markets.